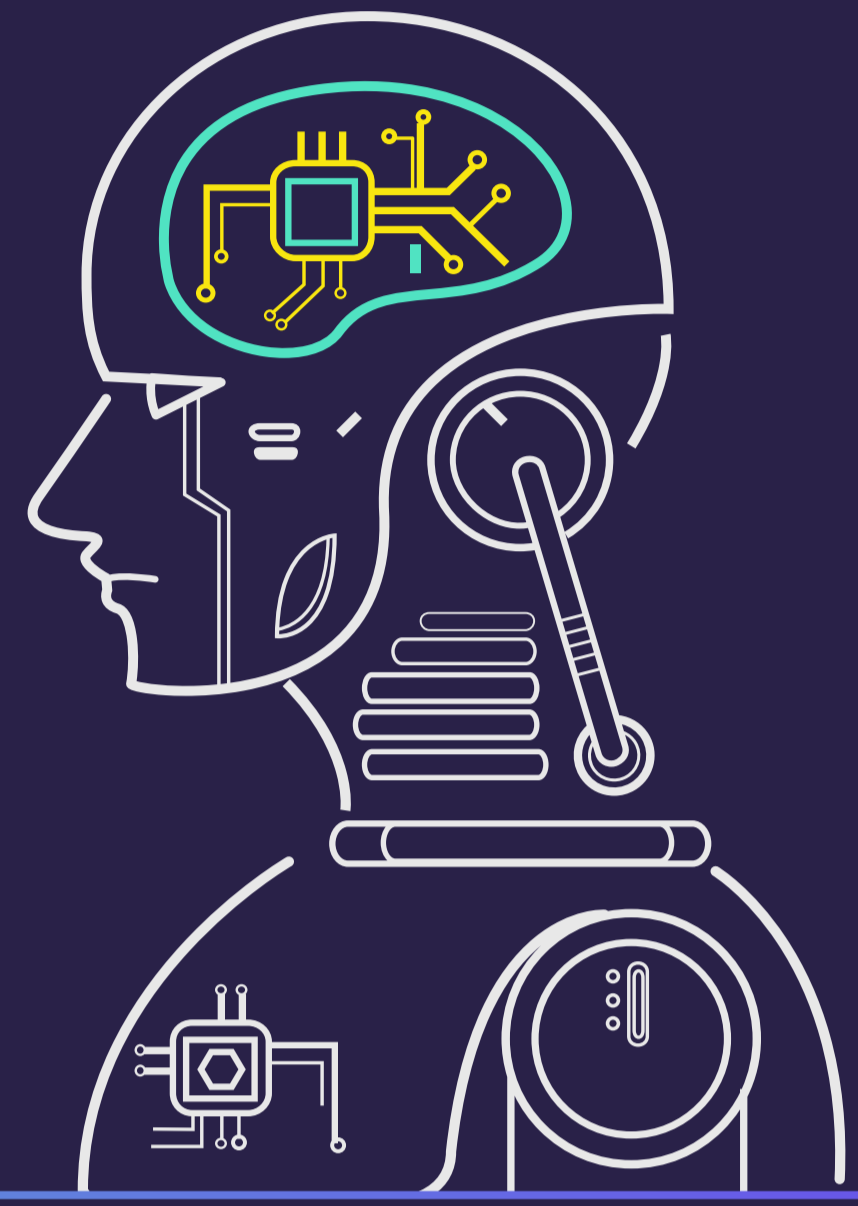


AI AN EMERGING TECHNOLOGY IN DATA PROTECTION

10 100 0010 10100 1000101001 01 00 01100100

ARTIFICIAL INTELLIGENCE (AI) DEFINED

A system's ability to correctly interpret external data, to learn from such data, and to use those learnings to achieve specific goals and tasks through flexible adaptation¹.



AWARENESS -VS- ACCEPTANCE

75%

Nearly **75% of global IT decision makers** cite awareness of AI-enabled data recovery solutions, with **over half of C-class executives** reporting a great deal of trust in vendors that offer them.

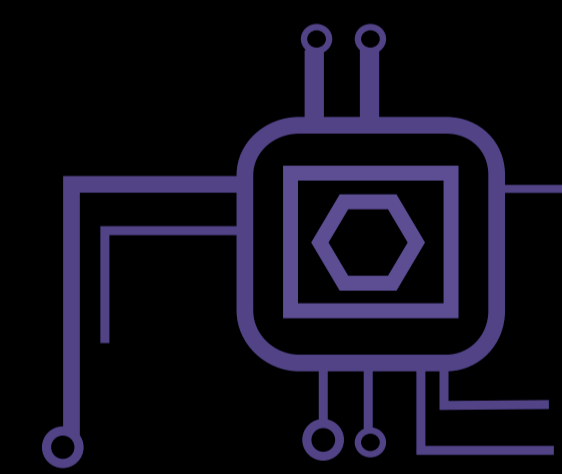
50%

In fact, **90% of IT decision makers** say they are likely to consider solutions that incorporate AI.

90%

THE AI-POWERED WISH LIST

Top priorities of IT decision makers for intelligent backup and recovery solutions



1

Proactively replicate data to the cloud before a downtime event or disaster occurs

2

Intelligently provide visibility into the entire backup IT infrastructure

3

Intelligently restore the most frequently accessed, cross-functional, or critical data first

4

Model and test different disaster and recovery scenarios



10 100 0010 10100 1000101001 01 00 01100100

Get more insights in the survey report:
Data Protection in the Fourth Industrial Revolution.

GET THE REPORT →

¹ <https://www.sciencedirect.com/science/article/pii/S0007681318301393>